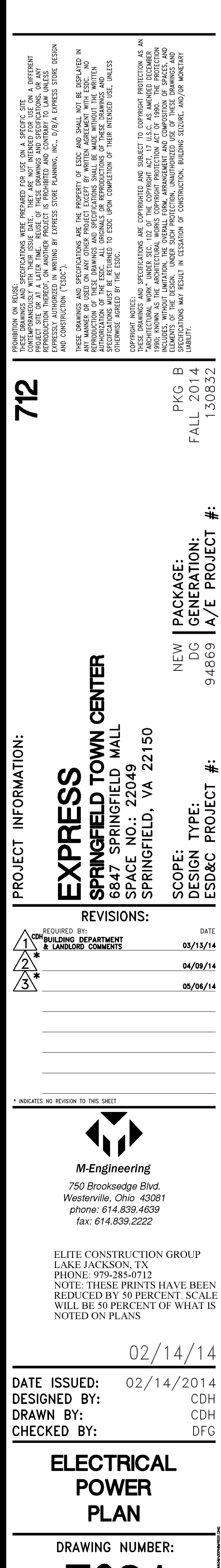


- 42 JUNCTION BOX INSTALLED AT 4'6" A.F.F. WITH FACE FLUSH TO DRYWALL AND 1/2" CONDUIT UP IN WALL TO UNIT IT SERVES FOR TEMPERATURE T-STAT(S)/SENSOR(S). COORDINATE EXACT REQUIREMENTS WITH MECHANICAL CONTRACTOR. MECHANICAL CONTRACTOR SHALL INSTALL ESDC FURNISHED CONDUIT CABLE FROM JUNCTION BOX TO HVAC UNITS.
- 43 120V, GFI, NO-CAS (AS REQUIRED) HVAC UNIT RECEPTACLE FURNISH AND INSTALL CONDUCTORS AND CONDUIT FOR 120V POWER.
- 44 DUCT MOUNTED SMOKE DETECTOR AND ASSOCIATED RESET/TEST/ALARM STATION, AS REQUIRED.
- 45 MECHANICAL CONTRACTOR SHALL PROVIDE AND INSTALL AIR DEVICE OR GENERAL CONTRACTOR SHALL PROVIDE AND INSTALL ACCESS PANEL TO BE USED AS ACCESS TO EQUIPMENT LOCATION ABOVE THE CEILING. THIS CONTRACTOR SHALL BE RESPONSIBLE TO ENSURE THAT A MINIMUM UNOBSTRUCTED FREE AREA OF 2'0" VERTICAL AND 3'-6" HORIZONTAL IN ALL DIRECTIONS AROUND EQUIPMENT IS MAINTAINED TO ALLOW FOR INSTALLATION AND MAINTENANCE OF EQUIPMENT. IF THIS FREE AREA CANNOT BE OBTAINED, CONTACT THE ESDC'S PROJECT MANAGER IMMEDIATELY.
- 46 FIELD VERIFY EXACT LOCATION OF RECEPTACLES WITH CONSTRUCTION MANAGER PRIOR TO INSTALLATION. RECEPTACLES AND COVERPLATES IN SALES AREAS SHALL BE MOUNTED AT 20" A.F.F. ON WALL. RECEPTACLE AND COVERPLATE SHALL BE THE COLOR AS DESIGNATED IN THE SPECIFICATIONS.
- 47 FIRE ALARM CONTROL PANEL. ELECTRICAL CONTRACTOR TO SUPPLY 120V DEDICATED CIRCUIT.
- 48 BURGULAR ALARM SYSTEM. ELECTRICAL CONTRACTOR TO SUPPLY 120V, DEDICATED CIRCUIT AND TELEPHONE OUTLET.
- 49 KEYPAD FOR SECURITY SYSTEM, MOUNTED AT 48" A.F.F., ON THE WALL, ON HANDLE-SIDE OF THE NON-SALES DOOR LEADING TO THE SALES AREA, AND 3/4" CONDUIT FROM JUNCTION BOX TO ABOVE CEILING.
- 50 MOTION DETECTOR TO BE INSTALLED AT EACH ENTRY/ROLLING GRILLE, EVERY EXIT DOOR, ABOVE EVERY CASHWAPR, AND IN THE NON-SALES CEILING CLOSE TO THE NON-SALES/SALES DOOR. VERIFY EXACT LOCATIONS WITH ESDC PROJECT MANAGER PRIOR TO WORK COMMENCEMENT.
- 51 DOOR CONTACT. GENERAL CONTRACTOR SHALL FURNISH AND INSTALL JUNCTION BOX AND 3/4" CONDUIT FROM BURGULAR ALARM TO 8" A.F.F. ON SIDE JAMB FOR ALL ROLLING GRILLE DOORS, AND/OR 4" AWAY FROM DOOR, ALIGNED WITH THE TOP OF THE DOOR FOR ALL SWING DOORS.
- 52 GLASS BREAKAGE SENSOR. ELECTRICAL CONTRACTOR SHALL FURNISH AND INSTALL JUNCTION BOX AND 3/4" CONDUIT FROM BURGULAR ALARM TO LOCATION.
- 53 INSTALL RECEPTACLE IN ACCESSIBLE LOCATION UNDER PLATFORM FOR LIGHTING. FIELD VERIFY EXACT LOCATION OF RECEPTACLES WITH CONSTRUCTION MANAGER PRIOR TO INSTALLATION.
- 54 THE ELECTRICAL CONTRACTOR SHALL INCLUDE IN HIS BID THE COST FOR A COMPLETE OPERATIONAL FIRE ALARM SYSTEM TO MEET LANDLORD AND CODE REQUIREMENTS. ALL DESIGN & INSTALLATION WORK SHALL BE BY A LANDLORD APPROVED FIRE ALARM CONTRACTOR AT TENANT'S ELECTRICAL CONTRACTOR'S EXCLUSIVE REQUEST. THE SYSTEM SHALL NOT BE LIMITED TO HORNBOUTH'S, STROBES, AND FIRE PROTECTION TAPPER & FLOW SWITCHES. FIELD VERIFY THE EXACT REQUIREMENTS PRIOR TO BID. PROVIDE 24M TO INTERFACE WITH LANDLORD SYSTEM.

## D

[illegible]712 PKG B  
ALL 2014  
130832

PROJECT INFORMATION: **EXPRESS** **SPRINGFIELD TOWN CENTER**  
68847 SPRINGFIELD MALL  
SPRINGFIELD, VA 22150  
SPACE NO.: 22049

REVISIONS:		DATE
1	REQUIRED BY: BUILDING DEPARTMENT & LANDLORD COMMENTS	03/13/14
2	*	04/09/14
3	*	05/06/14



**M-Engineering**  
750 Brookside Blvd.  
Westerville, Ohio 43081  
phone: 614.839.4639  
fax: 614.839.2222

ELITE CONSTRUCTION GROUP  
LAKE JACKSON, TX  
PHONE: 979-285-0712  
NOTE: THESE PRINTS HAVE BEEN  
REDUCED BY 50 PERCENT. SCALE  
WILL BE 50 PERCENT OF WHAT IS  
NOTED ON PLANS

02/14/14

DATE ISSUED: 02/14/2014  
DESIGNED BY: CDH  
DRAWN BY: CDH  
CHECKED BY: DEG

## ELECTRICAL POWER PLAN

DRAWING NUMBER:

## E02.1